

Schulze Main PCB Replacement

IMPORTANT

(MUST unplug Schulze PretreatMaker III)

(MUST toggle the power switch on then back off)

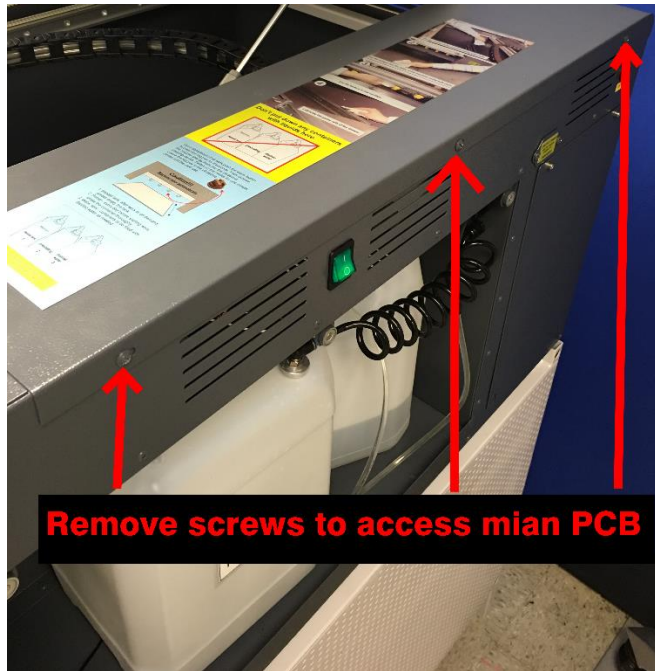
Tools needed

1. Phillips head screwdriver.
2. Small flat head screwdriver.
3. ESD strap.

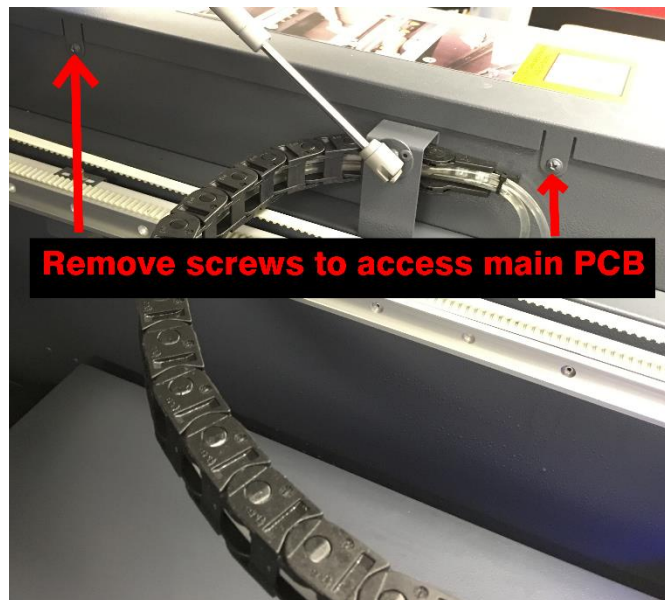


Schulze Main PCB Replacement

Step 1 remove screws to access main PCB.

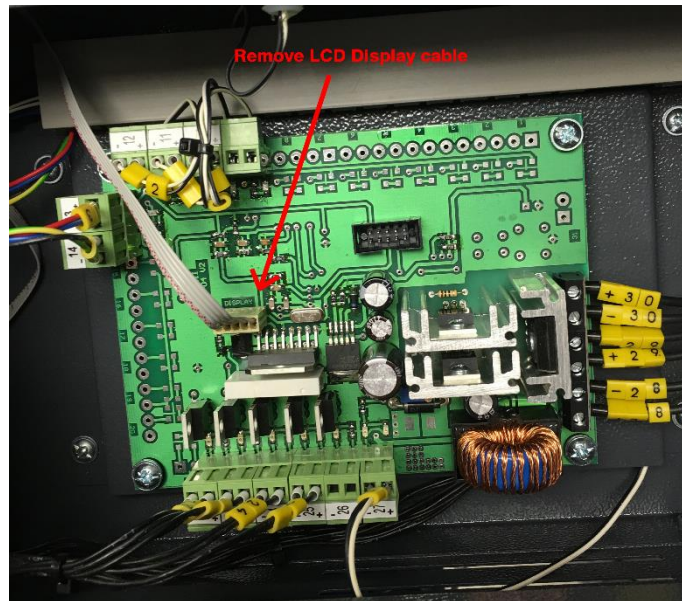


Open lid to access inside screws.



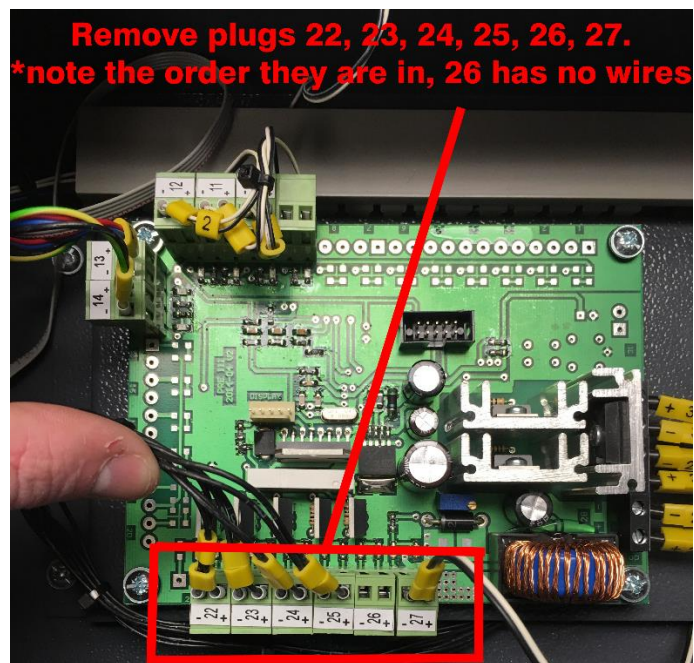
Schulze Main PCB Replacement

Step 2 remove LCD display cable.



Step 3 remove plugs labeled 22, 23, 24, 25, 26, and 27.

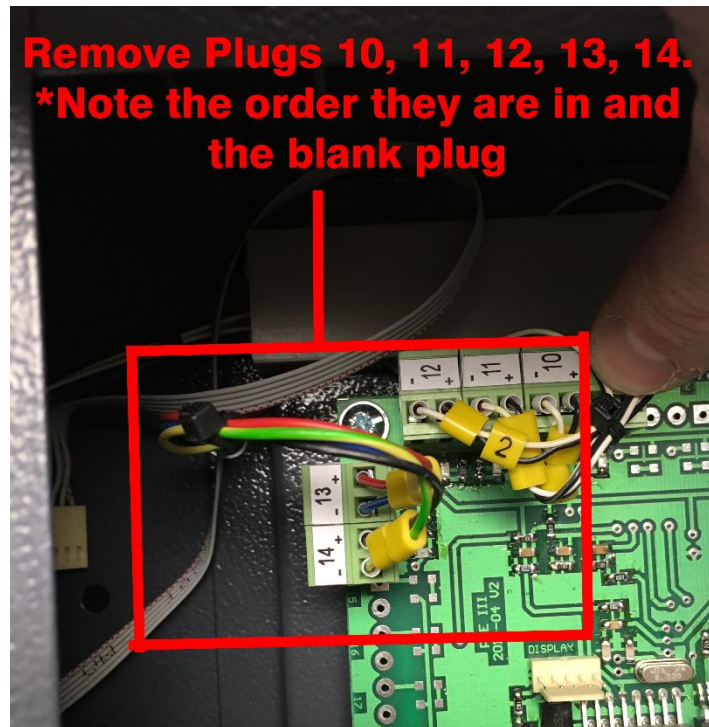
(NOTE plug 26 has no wires)



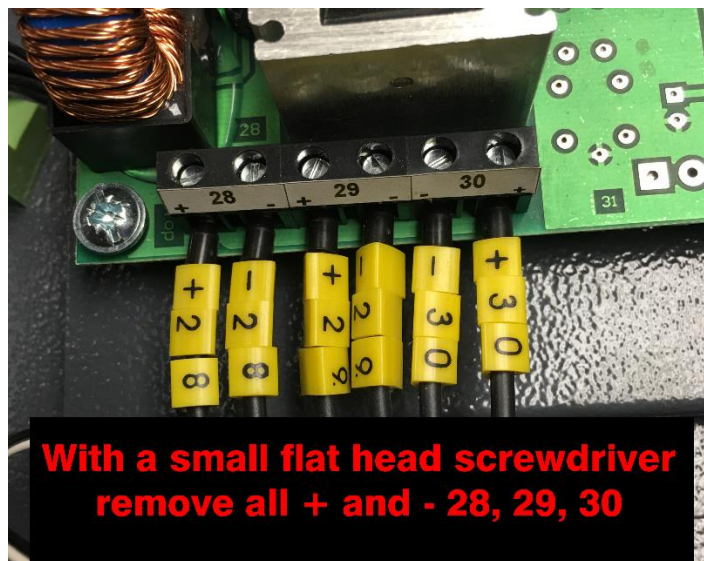
Schulze Main PCB Replacement

Step 4 remove plugs 10, 11, 12, 13, and 14.

(NOTE the blank plug)

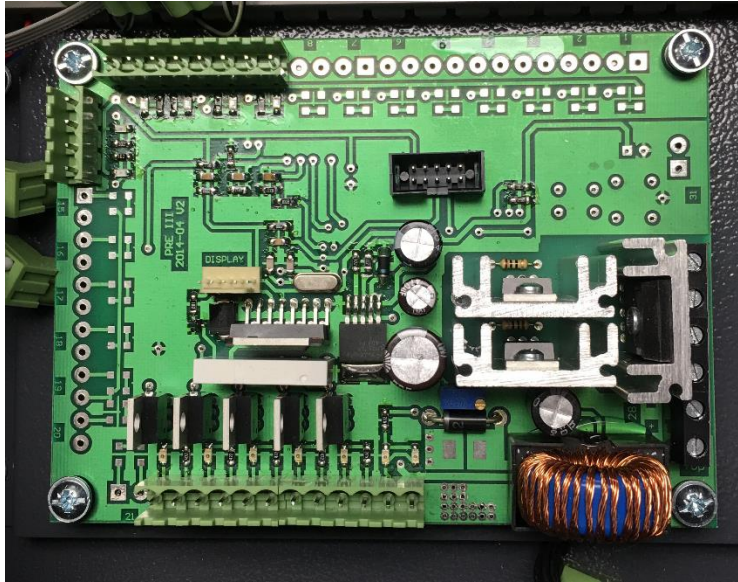


Step 5 remove wires +28, -28, +29, -29, +30, -30.



Schulze Main PCB Replacement

Step 6 remove the 4 screws in each corner.



Remove main PCB

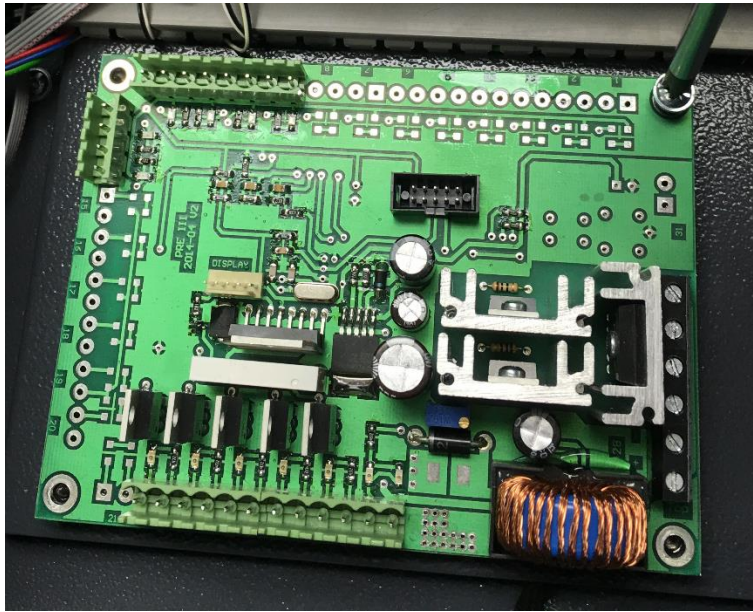
(NOTE make sure ESD strap is used when handling new main PCB)

Hook clip to unpainted surface.



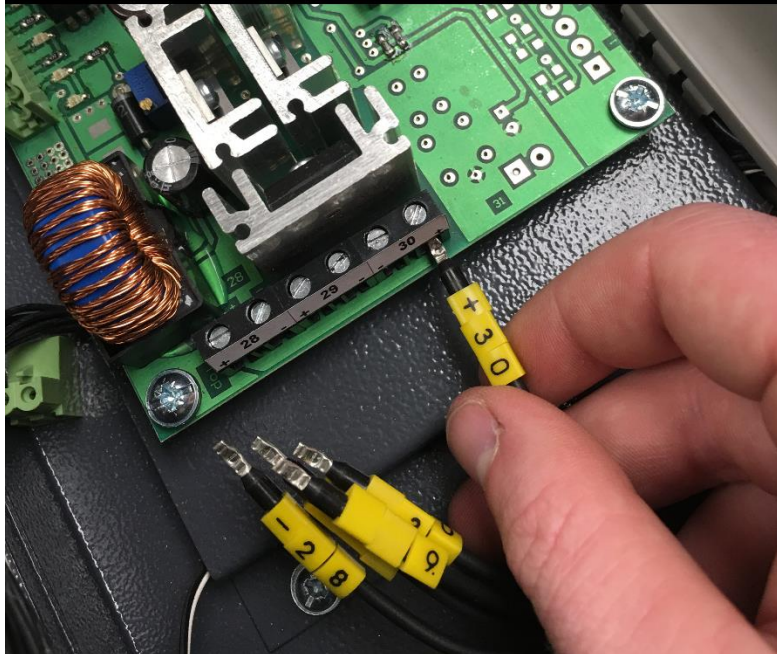
Schulze Main PCB Replacement

Step 7 put in the new main PCB with the 4 screws.



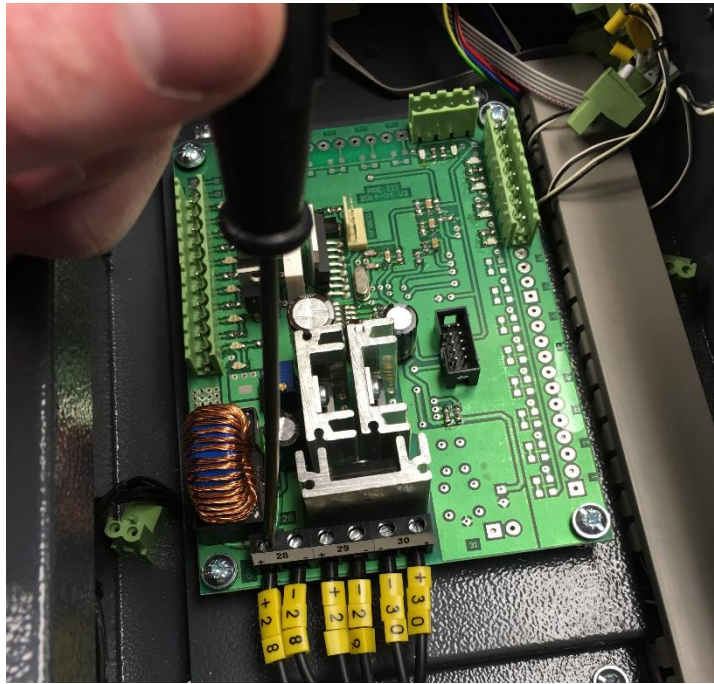
Step 8 replace wires +28, -28, +29, -29, +30, -30.

Replace + and - wires 28, 29, 30
***Note MUST connect + to + and - to -**



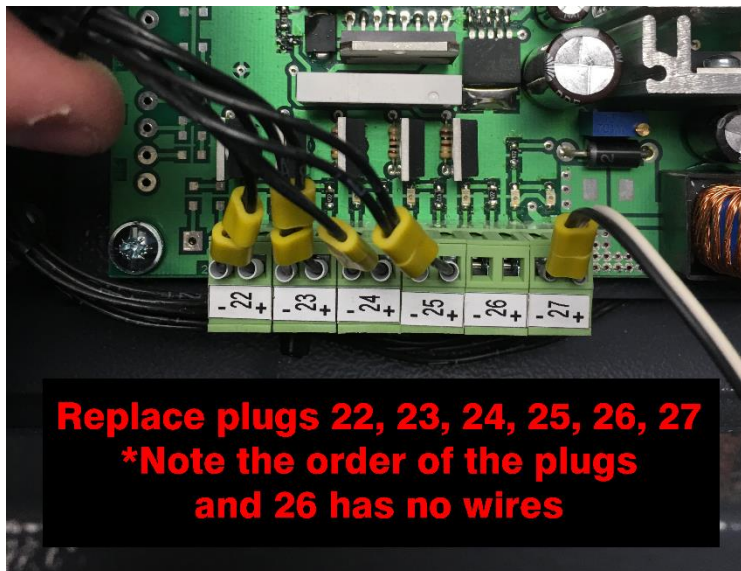
Schulze Main PCB Replacement

(NOTE make sure all wires are in the proper spots)



Step 9 replace plugs labeled 22, 23, 24, 25, 26, and 27.

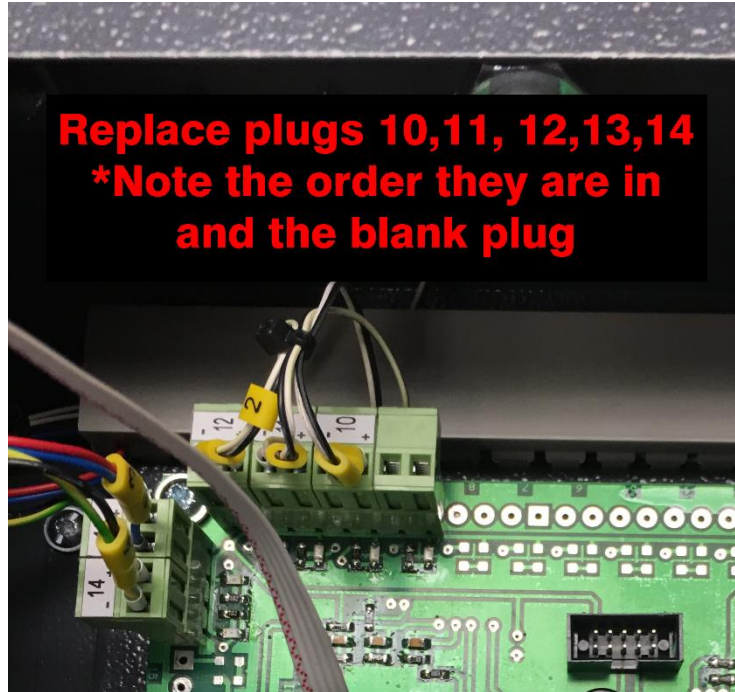
(NOTE plug 26 has no wires)



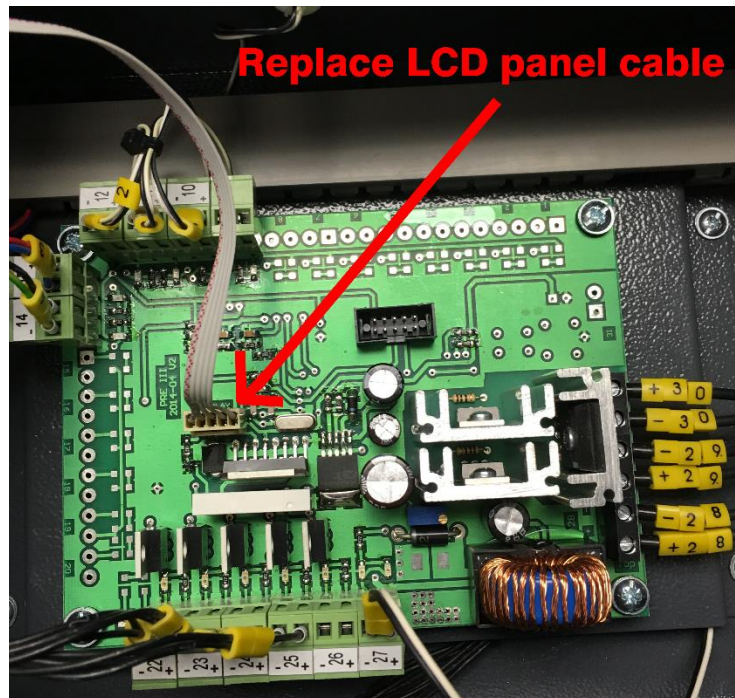
Schulze Main PCB Replacement

Step 10 replace plugs 10, 11, 12, 13, and 14.

(NOTE the order of the plugs and the blank plug)

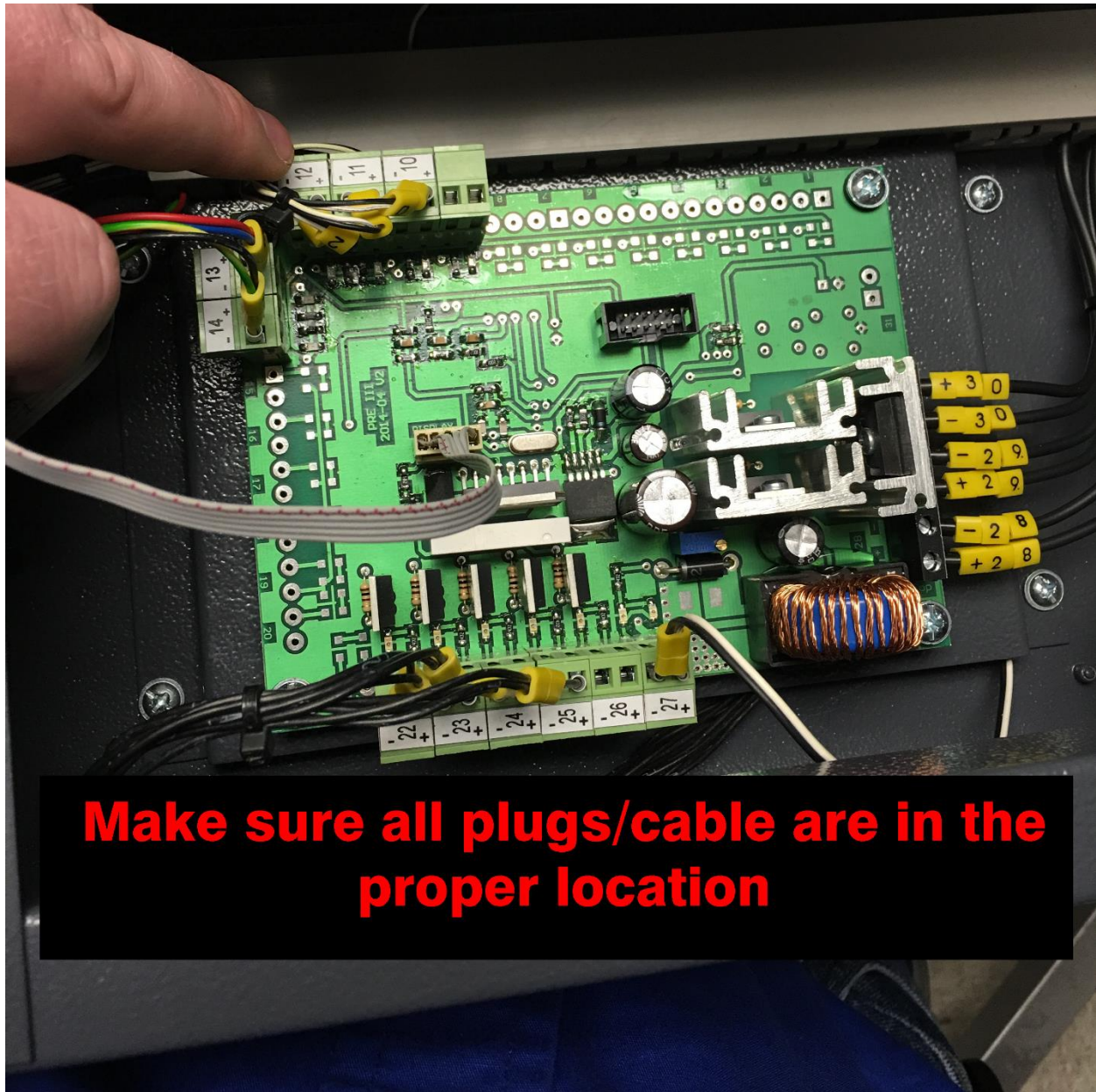


Step 11 Replace the LCD panel cable



Schulze Main PCB Replacement

Step 12 ensure that all plugs and wires are in the proper location



(NOTE after replacing the main PCB your Schulze PretreatMaker III will need to be recalibrated)